

LR1 LENSES FOR LUXEON REBEL LEDs



- Specially designed for Luxeon REBEL series of LEDs.
- Special care taken to make a uniform white or warm white illumination. Lenses work well with other colors, too.
- Lens material optical grade PMMA. Allows use of high current and temperature conditions
- Best available optical efficiency, more than 90%, with an extremely good cutoff of light
- Fastening of holden to PCB with appropriate adhesive, e.c. epoxy or polyurethane based. NOTE: DO NOT USE SUPERGLUE.

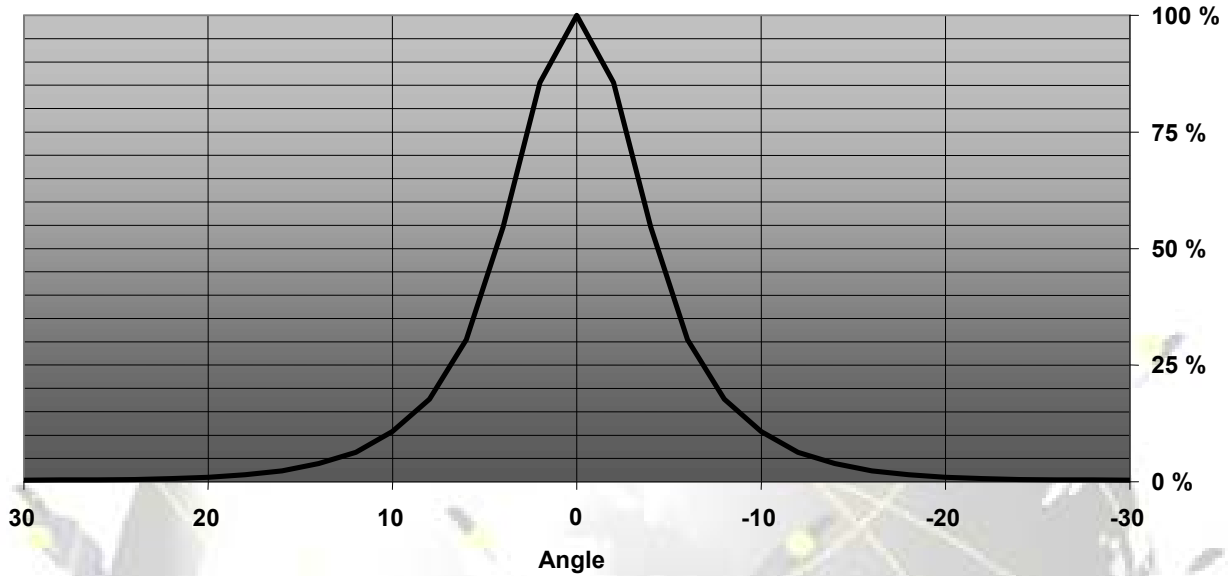
LENS TYPES

NAME	ORDERING CODE	FWHM Angle
LR1 REAL SPOT	FA10804_LR1-RS	±4°
LR1 DIFFUSER	FA10806_LR1-D	N/A
LR1 MEDIUM	FA10803_LR1-M	±13°
LR1 RECTANGULAR	FA10805_LR1-Rec	±20° x ±12°
LR1 WIDE	FA10890_LR1-W	±23°

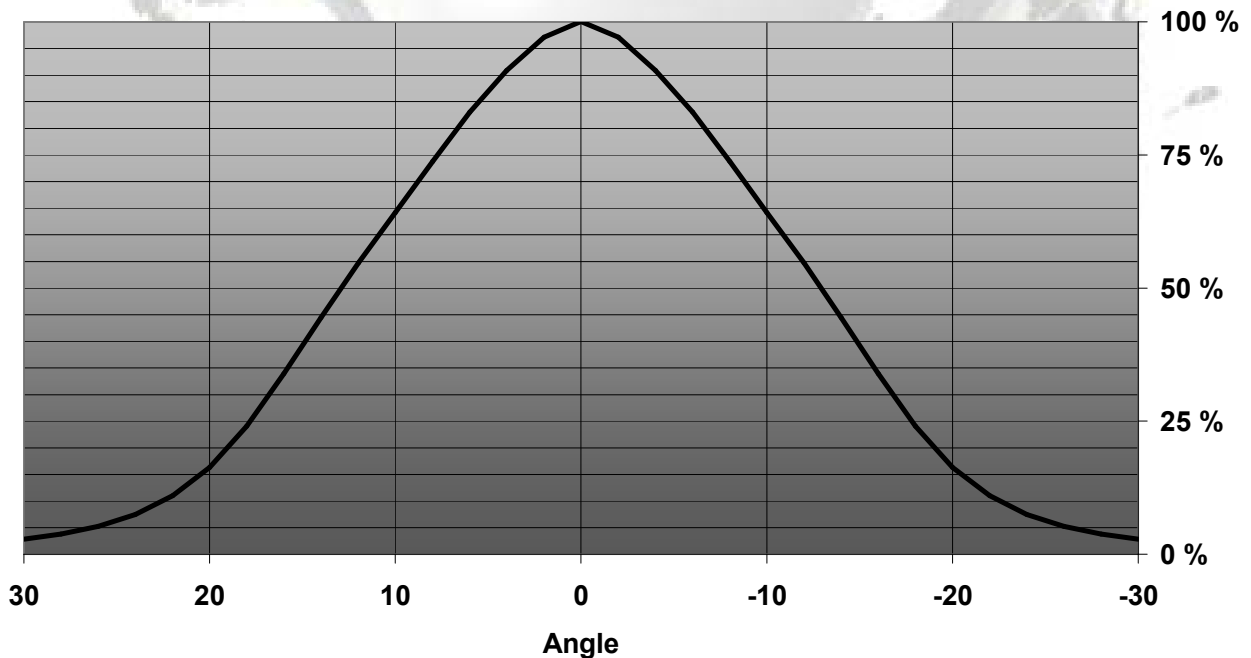
© Ledil Oy – PRELIMINARY - Subject to change without prior notice

MEASUREMENT DATA

Relative Intensity of LR1-RS

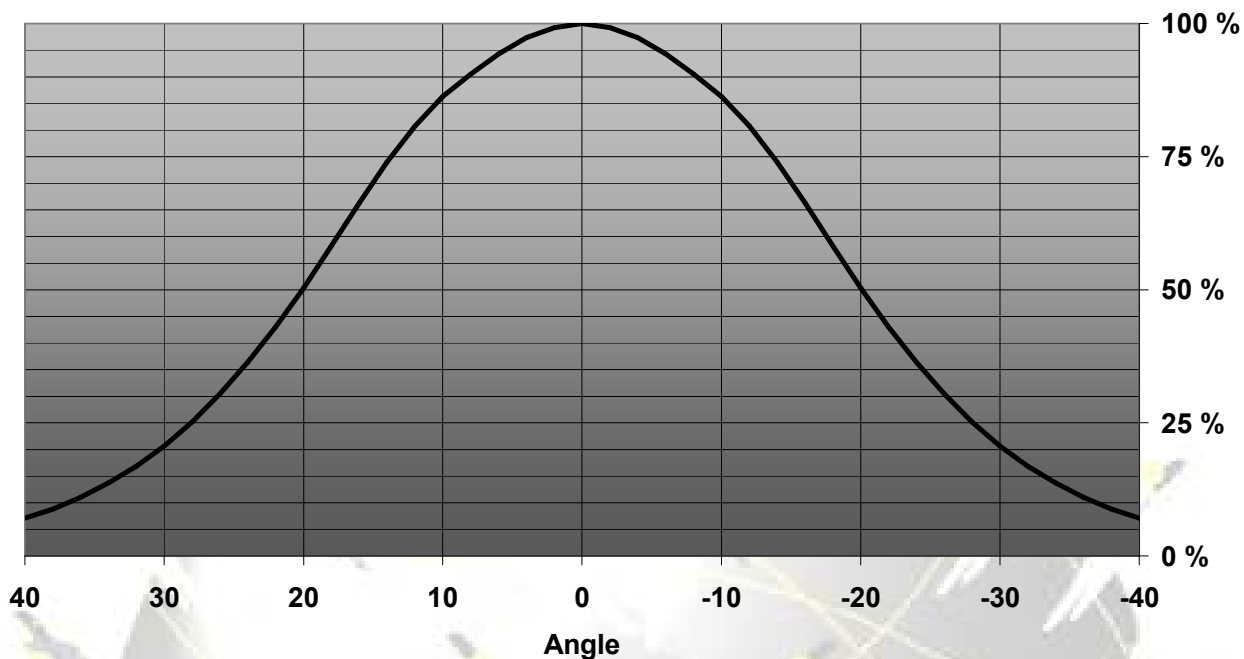


Relative Intensity of LR1-M

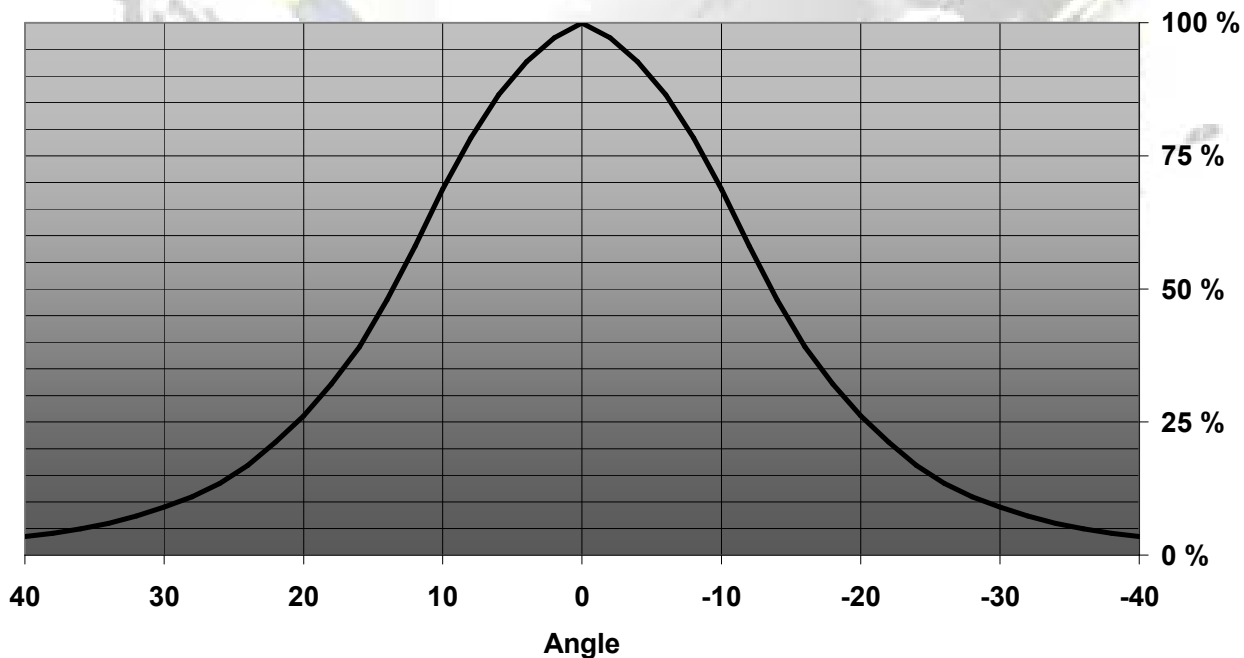


© Ledil Oy – PRELIMINARY - Subject to change without prior notice

Relative Intensity of LR1-REC (horizontal)

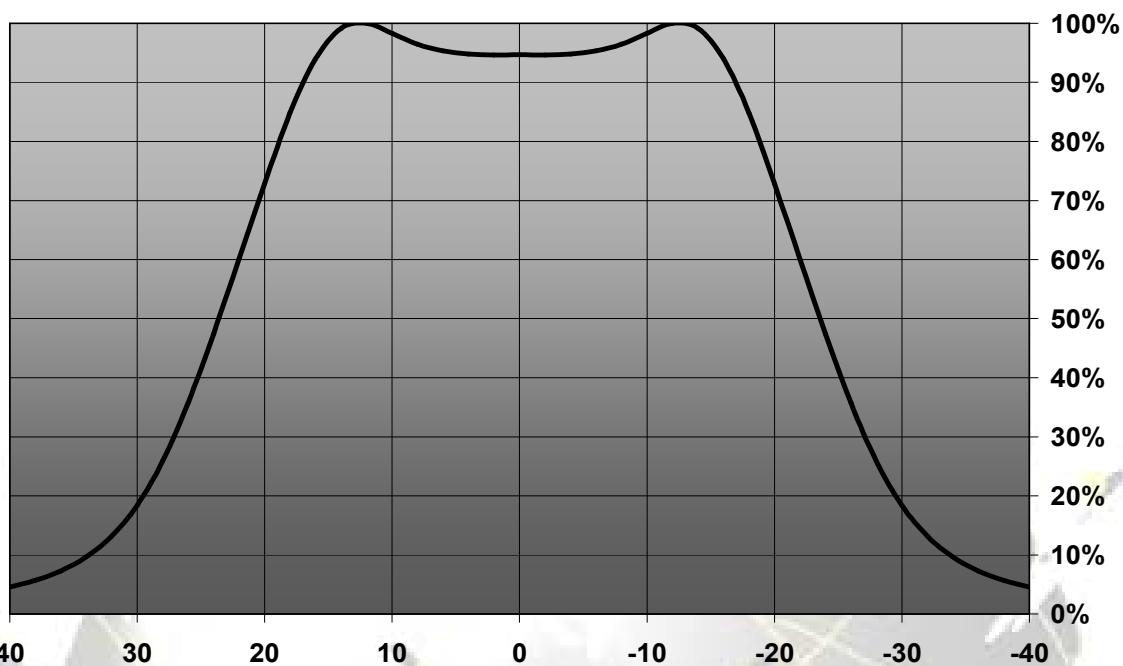


Relative Intensity of LR1-REC (vertical)



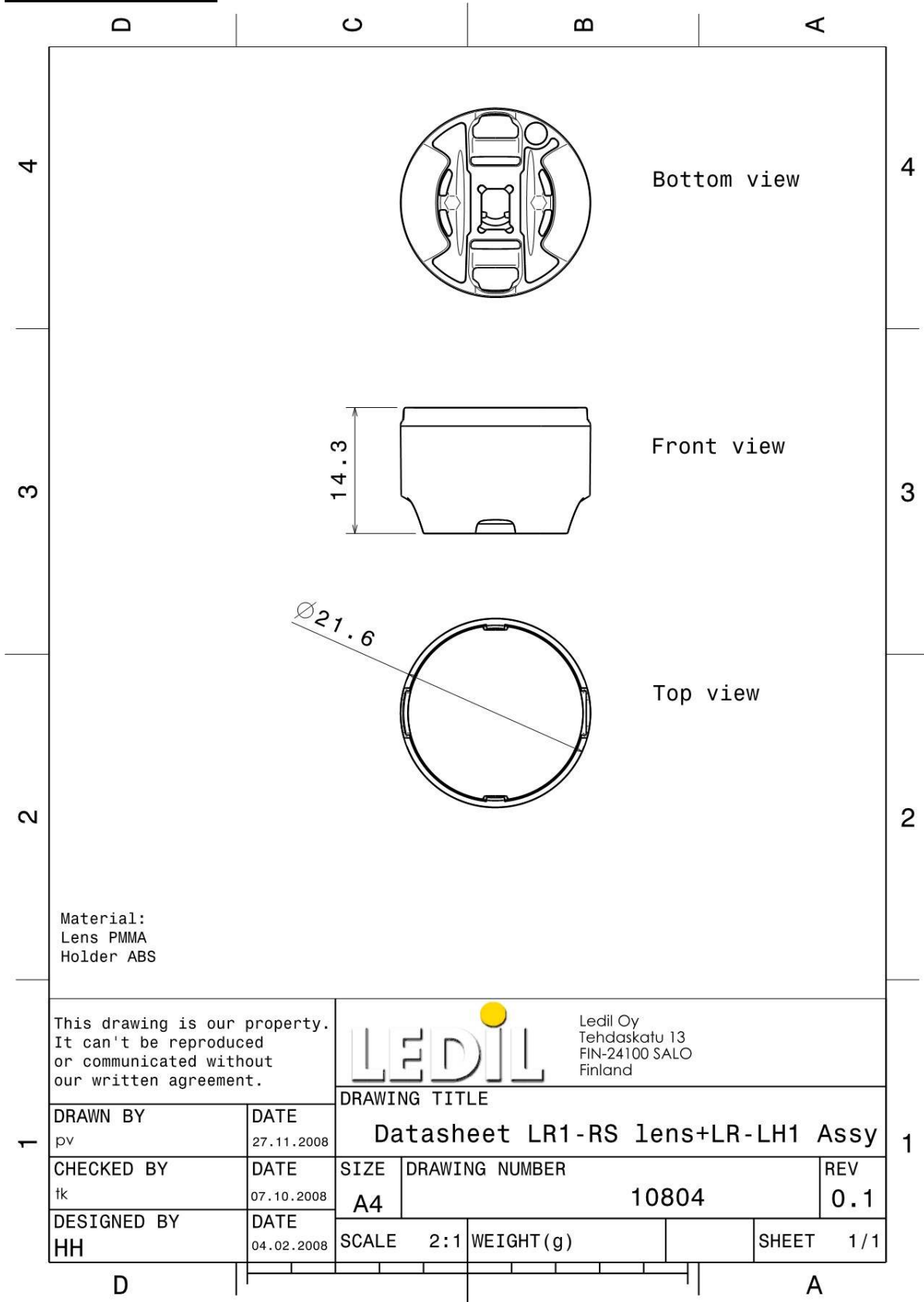
© Ledil Oy – PRELIMINARY - Subject to change without prior notice

Relative Intensity of FA10890_LR1-W



EULUMDAT & IES FILES AVAILABLE BY REQUEST

DRAWINGS



© Ledil Oy - PRELIMINARY - Subject to change without prior notice